



STEEL PRODUCT GUIDE

“If we haven’t got it..... We can get it”

Prime Industrial Products - Steel Supplies Division
69 Craigie Street, Bunbury WA 6230
Phone: 08 9780 1199 Fax: 08 9726 0399
Email: steel@primesupplies.com.au

June 2016 Version #2

Who We Are

Prime Industrial Products was established in October 2008 by Geoffrey Glenn, Mike Glenn and Regan Pye.

Prime Industrial Products specialises in the supply of industrial products and providing complete solutions for lifting, Rigging, Welding and Safety across a range of industries. In November 2015 Prime Industrial expanded its product range to include steel

- * Prime Industrial is an independent Steel Supplier
- * We can cut steel to length
- * We provide prompt service with our Drive in - Drive Out service
- * *If we haven't got it..... We can get it.*

Contact Us

69 Craigie Street, Bunbury WA 6230

Phone: 08 9780 1199 Fax: 08 9726 0399 Email: steel@primesupplies.com.au



Contents

	<u>Page</u>
Flat Bar	1 & 2
Square Bar	2
Angle bar	3
Round Bar	3
Structural	4
Plate	4
Sheet	4
Rectangular Hollow Section (RHS)	5
Patio Tube	5
Square Hollow Section (SHS)	6 & 7
Circular Hollow Section (CHS) (Pipe)	7
REO	8
Weld Mesh	8
Building Products	9
Hand Railing	10
Post Cap	10
Steel Profiles	11

FLAT BAR



Part Number	Material Description	End Colour
FL2036	FLAT BAR, 20X3MM, MILD STEEL, 6M LENGTH	Blue
FL2536	FLAT BAR, 25X3MM, G300 STEEL, 6M LENGTH	Blue
FL2556	FLAT BAR, 25X5MM, G300 STEEL, 6M LENGTH	Orange
FL2566	FLAT BAR, 25X6MM, G300 STEEL, 6M LENGTH	White
FL2586	FLAT BAR, 25X8MM, G300 STEEL, 6M LENGTH	Red
FL25106	FLAT BAR, 25X10MM, G300 STEEL, 6M LENGTH	Yellow
FL25126	FLAT BAR, 25X12MM, G300 STEEL, 6M LENGTH	Pink
FL3236	FLAT BAR, 32X3MM, G300 STEEL, 6M LENGTH	Blue
FL3256	FLAT BAR, 32X5MM, G300 STEEL, 6M LENGTH	Orange
FL3266	FLAT BAR, 32X6MM, G300 STEEL, 6M LENGTH	White
FL3286	FLAT BAR, 32X8MM, G300 STEEL, 6M LENGTH	Red
FL4036	FLAT BAR, 40X3MM, G300 STEEL, 6M LENGTH	Blue
FL4056	FLAT BAR, 40X5MM, G300 STEEL, 6M LENGTH	Orange
FL4066	FLAT BAR, 40X6MM, G300 STEEL, 6M LENGTH	White
FL4086	FLAT BAR, 40X8MM, G300 STEEL, 6M LENGTH	Red
FL40106	FLAT BAR, 40X10MM, G300 STEEL, 6M LENGTH	Yellow
FL40126	FLAT BAR, 40X12MM, G300 STEEL, 6M LENGTH	Pink
FL40166	FLAT BAR, 40X16MM, G300 STEEL, 6M LENGTH	Grey
FL5036	FLAT BAR, 50X3MM, G300 STEEL, 6M LENGTH	Blue
FL5056	FLAT BAR, 50X5MM, G300 STEEL, 6M LENGTH	Orange
FL5066	FLAT BAR, 50X6MM, G300 STEEL, 6M LENGTH	White
FL5086	FLAT BAR, 50X8MM, G300 STEEL, 6M LENGTH	Red
FL6556	FLAT BAR, 65X5MM, G300 STEEL, 6M LENGTH	Orange
FL6566	FLAT BAR, 65X6MM, G300 STEEL, 6M LENGTH	White
FL6586	FLAT BAR, 65X8MM, G300 STEEL, 6M LENGTH	Red
FL65106	FLAT BAR, 65X10MM, G300 STEEL, 6M LENGTH	Yellow
FL65126	FLAT BAR, 65X12MM, G300 STEEL, 6M LENGTH	Pink
FL7566	FLAT BAR, 75X6MM, G300 STEEL, 6M LENGTH	White
FL7586	FLAT BAR, 75X8MM, G300 STEEL, 6M LENGTH	Red
FL75106	FLAT BAR, 75X10MM, G300 STEEL, 6M LENGTH	Yellow
FL75126	FLAT BAR, 75X12MM, G300 STEEL, 6M LENGTH	Pink
FL75166	FLAT BAR, 75X16MM, G300 STEEL, 6M LENGTH	Grey
FL75206	FLAT BAR, 75X20MM, G300 STEEL, 6M LENGTH	Green
FL75256	FLAT BAR, 75X25MM, G300 STEEL, 6M LENGTH	Purple
FL75406	FLAT BAR, 75X40MM, G300 STEEL, 6M LENGTH	Yellow
FL9066	FLAT BAR, 90X6MM, G300 STEEL, 6M LENGTH	White
FL9086	FLAT BAR, 90X8MM, G300 STEEL, 6M LENGTH	Red
FL90106	FLAT BAR, 90X10MM, G300 STEEL, 6M LENGTH	Yellow
FL90126	FLAT BAR, 90X12MM, G300 STEEL, 6M LENGTH	Pink
FL10066	FLAT BAR, 100X6MM, G300 STEEL, 6M LENGTH	White
FL10086	FLAT BAR, 100X8MM, G300 STEEL, 6M LENGTH	Red
FL100106	FLAT BAR, 100X10MM, G300 STEEL, 6M LENGTH	Yellow
FL100126	FLAT BAR, 100X12MM, G300 STEEL, 6M LENGTH	Pink
FL100166	FLAT BAR, 100X16MM, G300 STEEL, 6M LENGTH	Grey
FL100206	FLAT BAR, 100X20MM, G300 STEEL, 6M LENGTH	Green
FL100256	FLAT BAR, 100X25MM, G300 STEEL, 6M LENGTH	Purple
FL13066	FLAT BAR, 130X6MM, G300 STEEL, 6M LENGTH	White

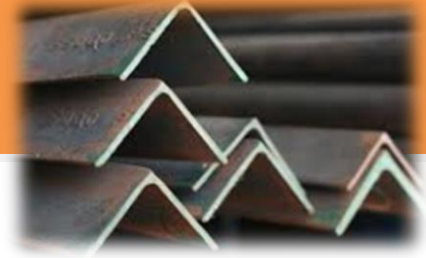
FLAT BAR Continued.....

Part Number	Material Description	End Colour
FL13086	FLAT BAR, 130X8MM, G300 STEEL, 6M LENGTH	Red
FL130106	FLAT BAR, 130X10MM, G300 STEEL, 6M LENGTH	Yellow
FL130126	FLAT BAR, 130X12MM, G300 STEEL, 6M LENGTH	Pink
FL15066	FLAT BAR, 150X6MM, G300 STEEL, 6M LENGTH	White
FL15086	FLAT BAR, 150X8MM, G300 STEEL, 6M LENGTH	Red
FL150106	FLAT BAR, 150X10MM, G300 STEEL, 6M LENGTH	Yellow
FL150126	FLAT BAR, 150X12MM, G300 STEEL, 6M LENGTH	Pink
FL18066	FLAT BAR, 180X6MM, G300 STEEL, 6M LENGTH	White
FL180106	FLAT BAR, 180X10MM, G300 STEEL, 6M LENGTH	Yellow
FL180126	FLAT BAR, 180X12MM, G300 STEEL, 6M LENGTH	Pink
FL20066	FLAT BAR, 200X6MM, G300 STEEL, 6M LENGTH	White
FL20086	FLAT BAR, 200X8MM, G300 STEEL, 6M LENGTH	Red
FL200106	FLAT BAR, 200X10MM, G300 STEEL, 6M LENGTH	Yellow
FL200126	FLAT BAR, 200X12MM, G300 STEEL, 6M LENGTH	Pink
FL25066	FLAT BAR, 250X6MM, G300 STEEL, 6M LENGTH	White
FL25086	FLAT BAR, 250X8MM, G300 STEEL, 6M LENGTH	Red
FL250106	FLAT BAR, 250X10MM, G300 STEEL, 6M LENGTH	Yellow
FL250126	FLAT BAR, 250X12MM, G300 STEEL, 6M LENGTH	Pink
FL30066	FLAT BAR, 300X6MM, G300 STEEL, 6M LENGTH	White
FL300106	FLAT BAR, 300X10MM, G300 STEEL, 6M LENGTH	Yellow
FL300126	FLAT BAR, 300X12MM, G300 STEEL, 6M LENGTH	Pink
FL2536G	FLAT BAR, 25X3MM, G300, HOT DIP GALVANISED, 6M	Blue
FL3236G	FLAT BAR, 32X3MM, G300, HOT DIP GALVANISED, 6M	Blue
FL4036G	FLAT BAR, 40X3MM, G300, HOT DIP GALVANISED, 6M	Blue
FL5036G	FLAT BAR, 50X3MM, G300, HOT DIP GALVANISED, 6M	Blue
FL5056DG	FLAT BAR, 50X5MM, DURAGAL, 6M LENGTH	Orange
FL7546DG	FLAT BAR, 75X4MM, DURAGAL, 6M LENGTH	Green
FL7556DG	FLAT BAR, 75X5MM, DURAGAL, 6M LENGTH	Orange
FL10046DG	FLAT BAR, 100X4MM, DURAGAL, 6M LENGTH	Green
FL10056DG	FLAT BAR, 100X5MM, DURAGAL, 6M LENGTH	Orange
FL15056DG	FLAT BAR, 150X5MM, DURAGAL, 6M LENGTH	Orange

SQUARE BAR

Part Number	Material Description	End Colour
SQ106	Square Bar 10mm G300 Steel 6m length	Yellow
SQ126	Square Bar 12mm G300 Steel 6m length	Pink
SQ166	Square Bar 16mm G300 Steel 6m length	Grey
SQ206	Square Bar 20mm G300 Steel 6m length	Green
SQ256	Square Bar 25mm G300 Steel 6m length	Purple

ANGLE BAR

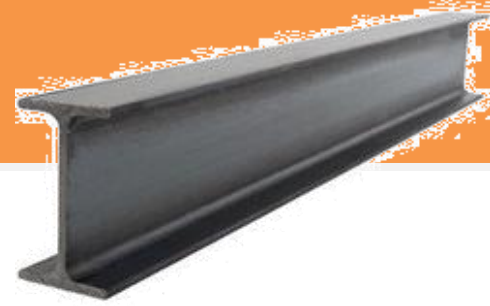


Part Number	Material Description	End Colour
AN252556	ANGLE, 25X25X5MM, G300 STEEL, 6M LENGTH	Orange
AN252566	ANGLE, 25X25X6MM, G300 STEEL, 6M LENGTH	White
AN2525375	ANGLE, 25X25X3MM, G300 STEEL, 7.5M LENGTH	Blue
AN2525675	ANGLE, 25X25X6MM, G300 STEEL, 7.5M LENGTH	White
AN30300375	ANGLE, 30X30X3MM, G300 STEEL, 7.5M LENGTH	Blue
AN3030575	ANGLE, 30X30X5MM, G300 STEEL 7.5M LENGTH	Orange
AN3030675	ANGLE, 30X30X6MM, G300 STEEL, 7.5M LENGTH	White
AN4040375	ANGLE, 40X40X3MM, G300 STEEL, 7.5M LENGTH	Blue
AN4040575	ANGLE, 40X40X5MM, G300 STEEL, 7.5M LENGTH	Orange
AN4040675	ANGLE, 40X40X6MM, G300 STEEL, 7.5M LENGTH	White
AN505036	ANGLE, 50X50X3MM, G300 STEEL, 6M LENGTH	Blue
AN505059	ANGLE, 50X50X5MM, G300 STEEL, 9M LENGTH	Orange
AN505069	ANGLE, 50X50X6MM, G300 STEEL, 9M LENGTH	White
AN505089	ANGLE, 50X50X8MM, G300 STEEL, 9M LENGTH	Red
AN656569	ANGLE, 65X65X6MM, G300 STEEL, 9M LENGTH	White
AN656589	ANGLE, 65X65X8MM, G300 STEEL, 9M LENGTH	Red
AN6565109	ANGLE, 65X65X10MM, G300 STEEL, 9M LENGTH	Yellow
AN755069	ANGLE, 75X50X6MM G300 STEEL 9M LENGTH	White
AN757569	ANGLE, 75X75X6MM, G300 STEEL, 9M LENGTH	White
AN757589	ANGLE, 75X75X8MM, G300 STEEL, 9M LENGTH	Red
AN7575109	ANGLE, 75X75X10MM, G300 STEEL, 9M LENGTH	Yellow
AN909069	ANGLE, 90X90X6MM, G300 STEEL, 9M LENGTH	White
AN10010069	ANGLE, 100X100X6MM, G300 STEEL, 9M LENGTH	White
AN10010089	ANGLE, 100X100X8MM, G300 STEEL, 9M LENGTH	Red
AN100100109	ANGLE, 100X100X10MM, G300 STEEL, 9M LENGTH	Yellow
AN30302.56DG	ANGLE, 30X30X2.5MM, DURAGAL, 6M LENGTH	Pink
AN40402.56DG	ANGLE, 40X40X2.5MM, DURAGAL, 6M LENGTH	Pink
AN50502.56DG	ANGLE, 50X50X2.5MM, DURAGAL, 6M LENGTH	Pink
AN505046DG	ANGLE, 50X50X4MM, DURAGAL, 6M LENGTH	Green
AN505056DG	ANGLE, 50X50X5MM, DURAGAL, 6M LENGTH	Orange

ROUND BAR

Part Number	Material Description	End Colour
RND66G	ROUND BAR, 6MM, MILD STEEL, GALVANISED, 6M LENGTH	White
RND86G	ROUND BAR, 8MM, G300 STEEL, GALVANISED, 6M LENGTH	Red
RND106G	ROUND BAR, 10MM G300 STEEL GALVANISED 6M LENGTH	Yellow
RND126G	ROUND BAR, 12MM G300 STEEL GALVANISED 6M LENGTH	Pink
RND166G	ROUND BAR, 16MM G300 STEEL GALVANISED 6M LENGTH	Grey
RND66	ROUND BAR, 6MM, MILD STEEL, 6M LENGTH	White
RND86	ROUND BAR, 8MM, G300 STEEL, 6M LENGTH	Red
RND106	ROUND BAR, 10MM, G300 STEEL, 6M LENGTH	Yellow
RND126	ROUND BAR, 12MM, G300 STEEL, 6M LENGTH	Pink
RND146	ROUND BAR, 14MM, G300, 6M LENGTH	Orange
RND166	ROUND BAR, 16MM, G300 STEEL, 6M LENGTH	Grey
RND206	ROUND BAR, 20MM, G300 STEEL, 6M LENGTH	Green
RND246	ROUND BAR, 24MM, G300 STEEL, 6M LENGTH	Pink
RND276	ROUND BAR, 27MM, G300 STEEL, 6M LENGTH	Blue
RND306	ROUND BAR, 30MM, G300 STEEL, 6M LENGTH	Yellow

STRUCTURAL



Part Number	Material Description
CH754012	Channel 75x40mm G300 Steel 12m length
CH1005012	Channel 100x50mm G300 steel 12m length
CH1256512	Channel, 125X65MM, G300, 12M length
CH1507512	Channel 150x75mm G300 steel 12m length
CH2007512	Channel 200x75mm G300 steel 12m length
CH100506G	Channel 100x50mm G300 Steel Hot Dip Galvanised 6m length
CH75406G	Channel 75x40mm G300 Steel Hot Dip Galvanised 6m length
UB1501412	Universal Beam 150UB 14kg/m G300 Steel 12m length
UB1801612	Universal Beam 180UB 16.1kg/m G300 Steel 12m length
UB2002212	Universal Beam 200UB 22.3kg/m G300 Steel 12m length
UB2002512	Universal Beam 200UB 25.4kg/m G300 Steel 12m length
UB2502512	Universal Beam 250UB 25.7kg/m G300 Steel 12m length

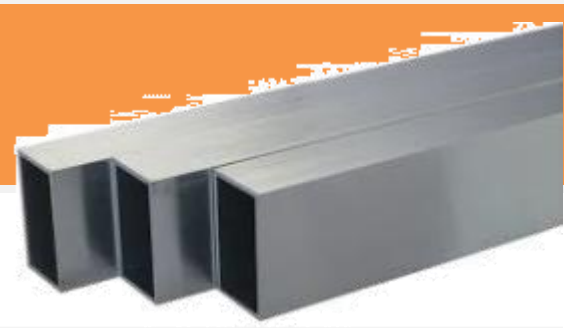
PLATE

Part Number	Material Description
PL301510	PLATE, 3X1.5M 10MM G250 STEEL
PL301512	PLATE, 3X1.5M 12MM G250 STEEL
PL301516	PLATE, 3X1.5M 16MM G250 STEEL
PL301520	PLATE, 3X1.5M 20MM G250 STEEL
PL301525	PLATE, 3X1.5M 25MM G250 STEEL
PL30153	PLATE, 3X1.5M 3MM G250 STEEL
PL30154	PLATE, 3X1.5M 4MM G250 STEEL
PL30155	PLATE, 3X1.5M 5MM G250 STEEL
PL30156	PLATE, 3X1.5M 6MM G250 STEEL
PL30158	PLATE, 3X1.5M 8MM G250 STEEL
SH24122.1FPB	FLOORPLATE, 2400X1200X2.1MM, HA250 STEEL BLACK
SH24122.8FPB	FLOORPLATE, 2400X1200X2.8MM, HA250 STEEL BLACK
SH24121.6FPA	FLOORPLATE, 2400X1200X1.6MM, 5052 H114 ALUMINIUM
SH24122FPA	FLOORPLATE, 2400X1200X2MM, 5052 H114 ALUMINIUM
SH24122.5FPA	FLOORPLATE, 2400X1200X2.5MM, 5052 H114 ALUMINIUM
SH24123FPA	FLOORPLATE, 2400X1200X3MM, 5052 H114 ALUMINIUM

SHEET

Part Number	Material Description
SH24120.95CA3	SHEET, 2400X1220X0.95MM, CA3 COLD ROLLED
SH24121.2CA3	SHEET, 2400X1200X1.2MM, CA3 COLD ROLLED
SH24121.6B	SHEET, 2400X1200X1.6MM, HA1 STEEL, BLACK
SH24122B	SHEET, 2400X1200X2MM, HA1 STEEL, BLACK
SH24123B	SHEET, 2400X1200X3MM, HA1 STEEL, BLACK
SH2412.55G	SHEET, 2400X1200X0.55MM, Z275 GALVABOND
SH2412.75G	SHEET, 2400X1200X0.75MM, Z275 GALVABOND
SH2412.95G	SHEET, 2400X1200X0.95MM, Z275 GALVABOND
SH24121.15G	SHEET, 2400X1200X1.15MM, Z275 GALVABOND
SH24121.55G	SHEET, 2400X1200X1.55MM, Z275 GALVABOND
SH24121.95G	SHEET, 2400X1200X1.95MM, Z275 GALVABOND
SH24122.9G	SHEET, 2400X1200X2.9MM, Z275 GALVABOND

RECTANGULAR HOLLOW SECTION (RHS)



Part Number	Material Description	End Colour
RHS115422G	CATTLE RAIL 115X42X2MM GALVANISED 6.1M LENGTH	Yellow
RHS50251.6P	RHS, 50X25X1.6MM, C350, PAINTED, 8M LENGTH	Purple
RHS50252P	RHS, 50X25X2MM, C350, PAINTED, 8M LENGTH	Yellow
RHS50252.5P	RHS, 50X25X2.5MM, C350, PAINTED, 8M LENGTH	Pink
RHS50253P	RHS, 50X25X3MM, C350, PAINTED, 8M LENGTH	Blue
RHS65352P	RHS, 65X35X2MM, C350, PAINTED, 8M LENGTH	Yellow
RHS65352.5P	RHS, 65X35X2.5MM, C350, PAINTED, 8M LENGTH	Pink
RHS65353P	RHS, 65X35X3MM, C350, PAINTED, 8M LENGTH	Blue
RHS75502P	RHS, 75X50X2MM, C350, PAINTED, 8M LENGTH	Yellow
RHS75502.5P	RHS, 75X50X2.5MM, C350, PAINTED, 8M LENGTH	Pink
RHS75503P	RHS, 75X50X3MM, C350, PAINTED, 8M LENGTH	Blue
RHS755048P	RHS, 75X50X4MM, C350, PAINTED, 8M LENGTH	Green
RHS100502P	RHS, 100X50X2MM, C350, PAINTED, 8M LENGTH	Yellow
RHS100502.5P	RHS, 100X50X2.5MM, C350, PAINTED, 8M LENGTH	Pink
RHS100503P	RHS, 100X50X3MM, C350, PAINTED, 8M LENGTH	Blue
RHS100504P	RHS, 100X50X4MM, C350, PAINTED, 8M LENGTH	Green
RHS100505P	RHS, 100X50X5MM, C350, PAINTED, 8M LENGTH	Orange
RHS150503P	RHS, 150X50X3MM, C350, PAINTED, 8M LENGTH	Blue
RHS1501005P	RHS, 150X100X5MM, C350, PAINTED, 8M LENGTH	Orange
RHS1501006P	RHS, 150X100X6MM, C350, PAINTED, 8M LENGTH	White
RHS2001004P	RHS, 200X100X4MM, C350, PAINTED, 8M LENGTH	Green
RHS2001005P	RHS, 200X100X5MM, C350, PAINTED, 8M LENGTH	Orange
RHS2001006P	RHS, 200X100X6MM, C350, PAINTED, 8M LENGTH	White
RHS50251.6G	RHS, 50X25X1.6MM C350 GALVANISED 8M LENGTH	Purple
RHS50252G	RHS, 50X25X2MM C350 GALVANISED 8M LENGTH	Yellow
RHS50252.5G	RHS, 50X25X2.5MM C350 GALVANISED 8M LENGTH	Pink
RHS50253G	RHS, 50X25X3MM C350 GALVANISED 8M LENGTH	Blue
RHS65352G	RHS, 65X35X2MM C350 GALVANISED 8M LENGTH	Yellow
RHS65352.5G	RHS, 65X35X2.5MM C350 GALVANISED 8M LENGTH	Pink
RHS65353G	RHS, 65X35X3MM C350 GALVANISED 8M LENGTH	Blue
RHS75502G	RHS, 75X50X2MM C350 GALVANISED 8M LENGTH	Yellow
RHS75502.5G	RHS, 75X50X2.5MM C350 GALVANISED 8M LENGTH	Pink
RHS75503G	RHS, 75X50X3MM C350 GALVANISED 8M LENGTH	Blue
RHS75504G	RHS, 75X50X4MM, C350 GALVANISED, 8M LENGTH	Green
RHS100501.6G	RHS, 100X50X1.6MM C350 GALVANISED 8M LENGTH	Purple
RHS100502G	RHS, 100X50X2MM C350 GALVANISED 8M LENGTH	Yellow
RHS100502.5G	RHS, 100X50X2.5MM C350 GALVANISED 8M LENGTH	Pink
RHS100503G	RHS, 100X50X3MM C350 GALVANISED 8M LENGTH	Blue
RHS100504G	RHS, 100X50X4MM C350 GALVANISED 8M LENGTH	Green
RHS150502G	RHS, 150X50X2MM C350 GALVANISED 8M LENGTH	Yellow
RHS150503G	RHS, 150X50X3MM C350 GALVANISED 8M LENGTH	Blue

Patio Tube

Part Number	Material Description	End Colour
PT76381.66.1	PATIO TUBE, 76X38X1.6 GALVANISED 6.1M LENGTH	Purple
PT76381.68	PATIO TUBE, 76X38X1.6 GALVANISED 8M LENGTH	Purple
PBI	BRACKET, INTERNAL, TO SUIT PATIO TUBE 76X38MM	

SQUARE HOLLOW SECTION (SHS)



Part Number	Material Description	End Colour
SHS20201.6P	SHS, 20X20X1.6MM, C350, PAINTED, 6.5M LENGTH	Purple
SHS25251.6P	SHS, 25X25X1.6MM, C350, PAINTED, 6.5M LENGTH	Purple
SHS25252P	SHS, 25X25X2MM, C350, PAINTED, 6.5M LENGTH	Yellow
SHS25252.5P	SHS, 25X25X2.5MM, C350, PAINTED, 6.5M LENGTH	Pink
SHS25253P	SHS, 25X25X3MM, C350, PAINTED, 6.5M LENGTH	Blue
SHS30301.6P	SHS, 30X30X1.6MM, C350, PAINTED, 8M LENGTH	Purple
SHS30302P	SHS, 30X30X2MM, C350, PAINTED, 8M LENGTH	Yellow
SHS35351.6P	SHS, 35X35X1.6MM, C350, PAINTED, 8M LENGTH	Purple
SHS40402P	SHS, 40X40X2MM, C350, PAINTED, 8M LENGTH	Yellow
SHS40402.5P	SHS, 40X40X2.5MM, C350, PAINTED, 8M LENGTH	Pink
SHS40403P	SHS, 40X40X3MM, C350, PAINTED, 8M LENGTH	Blue
SHS40404P	SHS, 40X40X4MM, C350, PAINTED, 8M LENGTH	Green
SHS50501.6P	SHS, 50X50X1.6MM, C350, PAINTED, 8M LENGTH	Purple
SHS50502.5P	SHS, 50X50X2.5MM, C350, PAINTED, 8M LENGTH	Pink
SHS50502P	SHS, 50X50X2MM, C350, PAINTED, 8M LENGTH	Yellow
SHS50503P	SHS, 50X50X3MM, C350, PAINTED, 8M LENGTH	Blue
SHS50504P	SHS, 50X50X4MM, C350, PAINTED, 8M LENGTH	Green
SHS65652P	SHS, 65X65X2MM, C350, PAINTED, 8M LENGTH	Yellow
SHS65652.5P	SHS, 65X65X2.5MM, C350, PAINTED, 8M LENGTH	Pink
SHS65653P	SHS, 65X65X3MM, C350, PAINTED, 8M LENGTH	Blue
SHS75752P	SHS, 75X75X2MM, C350, PAINTED, 8M LENGTH	Yellow
SHS75752.5P	SHS, 75X75X2.5MM, C350, PAINTED, 8M LENGTH	Pink
SHS75753P	SHS, 75X75X3MM, C350, PAINTED, 8M LENGTH	Blue
SHS75754P	SHS, 75X75X4MM C350 GALVANISED 8M LENGTH	Green
SHS75755P	SHS, 75X75X5MM, C350, PAINTED, 8M LENGTH	Orange
SHS75756P	SHS, 75X75X6MM, C350, PAINTED, 8M LENGTH	White
SHS89893.5P	SHS, 89X89X3.5MM, C350, PAINTED, 8M LENGTH	Grey
SHS89895P	SHS, 89X89X5MM, C350, PAINTED, 8M LENGTH	Orange
SHS1001002P	SHS, 100X100X2MM, C350, PAINTED, 8M LENGTH	Yellow
SHS1001003P	SHS, 100X100X3MM, C350, PAINTED, 8M LENGTH	Blue
SHS1001004P	SHS, 100X100X4MM, C350, PAINTED, 8M LENGTH	Green
SHS1001005P	SHS, 100X100X5MM, C350, PAINTED, 8M LENGTH	Orange
SHS1001006P	SHS, 100X100X6MM, C350, PAINTED, 8M LENGTH	White
SHS1001009P	SHS, 100X100X9MM, C350, PAINTED, 8M LENGTH	Purple
SHS1501505P	SHS, 150X150X5MM, C350, PAINTED, 8M LENGTH	Orange
SHS1501506P	SHS, 150X150X6MM, C350, PAINTED, 8M LENGTH	White
SHS20201.6G	SHS, 20X20X1.6MM, C350, GALVANISED, 6.5M LENGTH	Purple
SHS25251.6G	SHS, 25X25X1.6MM C350 GALVANISED 6.5M LENGTH	Purple
SHS25252G	SHS, 25X25X2MM, C350, GALVANISED, 6.5M LENGTH	Yellow
SHS25252.5G	SHS, 25X25X2.5MM, C350, GALVANISED, 6.5M LENGTH	Pink
SHS30301.6G	SHS, 30X30X1.6MM C350 GALVANISED 8M LENGTH	Purple
SHS30302G	SHS, 30X30X2MM, C350, GALVANISED, 8M LENGTH	Yellow
SHS35351.6G	SHS, 35X35X1.6MM C350 GALVANISED 8M LENGTH	Purple
SHS40402G	SHS, 40X40X2MM C350 GALVANISED 8M LENGTH	Yellow
SHS40402.5G	SHS, 40X40X2.5MM C350 GALVANISED 8M LENGTH	Pink

SQUARE HOLLOW SECTION (SHS) Continued.....

Part Number	Material Description	End Colour
SHS40403G	SHS, 40X40X3MM C350 GALVANISED 8M LENGTH	Blue
SHS50501.6G	SHS, 50X50X1.6MM C350 GALVANISED 8M LENGTH	Purple
SHS50502G	SHS, 50X50X2MM C350 GALVANISED 8M LENGTH	Yellow
SHS50502.5G	SHS, 50X50X2.5MM C350 GALVANISED 8M LENGTH	Pink
SHS50503G	SHS, 50X50X3MM C350 GALVANISED 8M LENGTH	Blue
SHS50504G	SHS, 50X50X4MM C350 GALVANISED 8M LENGTH	Green
SHS50505G	SHS, 50X50X5MM C350 GALVANISED 8M LENGTH	Orange
SHS50505P	SHS, 50X50X5MM C350 GALVANISED 8M LENGTH	Orange
SHS65652G	SHS, 65X65X2MM C350 GALVANISED 8M LENGTH	Yellow
SHS65652.5G	SHS, 65X65X2.5MM C350 GALVANISED 8M LENGTH	Pink
SHS65653G	SHS, 65X65X3MM C350 GALVANISED 8M LENGTH	Blue
SHS75752G	SHS, 75X75X2MM C350 GALVANISED 8M LENGTH	Yellow
SHS75752.5G	SHS, 75X75X2.5MM C350 GALVANISED 8M LENGTH	Pink
SHS75753G	SHS, 75X75X3MM C350 GALVANISED 8M LENGTH	Blue
SHS75754G	SHS, 75X75X4MM C350 GALVANISED 8M LENGTH	Green
SHS75755G	SHS, 75X75X5MM C350 GALVANISED 8M LENGTH	Orange
SHS89893.5G	SHS, 89X89X3.5MM C350 GALVANISED 8M LENGTH	Grey
SHS90902G	SHS, 90X90X2MM C350 GALVANISED 8M LENGTH	Yellow
SHS1001002G	SHS, 100X100X2MM C350 GALVANISED 8M LENGTH	Yellow
SHS1001003G	SHS, 100X100X3MM C350 GALVANISED 8M LENGTH	Blue
SHS1001004G	SHS, 100X100X4MM C350 GALVANISED 8M LENGTH	Green
SHS1001005G	SHS, 100X100X5MM C350 GALVANISED 8M LENGTH	Orange

CIRCULAR HOLLOW SECTION (CHS) (PIPE)

Part Number	Material Description	End Colour
CHS15MBP	CHS, 015NB, MEDIUM WALL, BLACK, PLAIN END, C250, 6.5M LENGTH	Blue
CHS15MGP	CHS, 015NB, MEDIUM WALL, GALVANISED, PLAIN END, C250, 6.5M	Blue
CHS20MBP	CHS, 020NB, MEDIUM WALL, BLACK, PLAIN END, C250, 6.5M LENGTH	Blue
CHS20MGP	CHS, 020NB, MEDIUM WALL, GALVANISED, PLAIN END, C250, 6.5M	Blue
CHS25MBP	CHS, 025NB, MEDIUM WALL, BLACK, PLAIN END, C250, 6.5M LENGTH	Blue
CHS25MGP	CHS, 025NB, MEDIUM WALL, GALVANISED, PLAIN END, C250, 6.5M	Blue
CHS32MBP	CHS, 032NB, MEDIUM WALL, BLACK PLAIN END PIPE, 6.5M LENGTH	Blue
CHS32MGP	CHS, 032NB, MEDIUM WALL, GALVANISED PLAIN END PIPE, 6.5M	Blue
CHS40MBP	CHS, 040NB, MEDIUM WALL, BLACK PLAIN END PIPE, 6.5M LENGTH	Blue
CHS40MGP	CHS, 040NB, MEDIUM WALL, GALVANISED PLAIN END PIPE, 6.5M	Blue
CHS50MBP	CHS, 050NB, MEDIUM WALL, BLACK PLAIN END PIPE, 6.5M LENGTH	Blue
CHS50MGP	CHS, 050NB, MEDIUM WALL, GALVANISED PLAIN END PIPE, 6.5M	Blue
CHS80MBP	CHS, 080NB, MEDIUM WALL, BLACK PLAIN END PIPE, 6.5M LENGTH	Blue
CHS80MGP	CHS, 080NB, MEDIUM WALL, GALVANISED PLAIN END PIPE, 6.5M LEN	Blue
CHS100MGP	CHS, 100NB MEDIUM WALL, GALVANISED PLAIN END PIPE, 6.5M LENG	Blue
CHS100MBP	CHS, 100NB, MEDIUM WALL, BLACK, PLAIN END, C250, 6.5M LENGTH	Blue
CHS150MGP	CHS, 150NB, MEDIUM WALL, GALVANISED PLAIN END PIPE, 6.5M	Blue



REO

Part Number	Material Description
BCP2540	REO BAR AND MESH CHAIR PLASTIC COMBO 25/40MM(100)
BCP5065	REO BAR AND MESH CHAIR PLASTIC COMBO 50/65MM(100)
BCP7590	REO BAR AND MESH CHAIR PLASTIC COMBO 75/90MM(100)
RB106	REO BAR, 10MM, 6M LENGTH
RB126	REO BAR, 12MM, 6M LENGTH
RB166	REO BAR, 16MM, 6M LENGTH
RB206	REO BAR, 20MM, 6M LENGTH
RB246	REO BAR, 24MM 6M LENGTH
MESHF52	REO MESH, F52, 6X2.4M
MESHF62	REO MESH, F62, 6X2.4M
MESHF63	REO MESH, F63, 6X2.3M
MESHF72	REO MESH, F72, 6X2.4M
MESHF81	REO MESH, F81 6X2.4M
MESHF82	REO MESH, F82, 6X2.4M
TM83200	TRENCH MESH, 8MM 3 BAR 200MM X 6M
TM84300	TRENCH MESH, 8MM 4 BAR 300MM X 6M
TM85400	TRENCH MESH, 8MM 5 BAR 400MM X 6M
TM113200	TRENCH MESH, 11MM 3 BAR 200MM X 6M
TM114300	TRENCH MESH, 11MM 4 BAR 300MM X 6M

WELDMESH

Part Number	Material Description
WM252525	WELDMESH, 25X25X2.5MM 1.2X2.0M SHEET
WM50253	WELDMESH, 25X50X3.15MM 1.2X2.0M SHEET
WM50503	WELDMESH, 50X50X3.15MM 1.2X2.0M SHEET
WM50504	WELDMESH, 50X50X4MM 1.2X2.0M SHEET
WM75504	WELDMESH, 50X75X4MM 1.2X2.0M SHEET
WM1001005	WELDMESH, 100X100X5MM 1.2X2.0M SHEET
WM113	WELDMESH, 25X25X3MM, 3.0X2.4M SHEET
WM224	WELDMESH, 50X50X4MM, 3.0X2.4M SHEET



BUILDING PRODUCTS

(Ordered as required)

Part Number	Material Description
RC.42COCB-STR	ROOF CLADDING, 0.42MM, CORROGATED, COLORBOND
RC.42COZA-STR	ROOF CLADDING, 0.42MM, CORROGATED, ZINCALUME
RC.42MCCB-STR	ROOF CLADDING, 0.42MM, MONOCLAD, COLORBOND
RC.42MCZA-STR	ROOF CLADDING, 0.42MM, MONOCLAD, ZINCALUME
CP10010	C PURLIN, 100X1.0MM, GALVABOND
CP10012	C PURLIN, 100X1.2MM, GALVABOND
CP10015	C PURLIN, 100X1.5MM GALVABOND
CP10019	C PURLIN 100X1.9MM GALVABOND
CP15012	C PURLIN, 150X1.2MM GALVABOND
CP15015	C PURLIN, 150X1.5MM GALVABOND
CP15019	C PURLIN, 150X1.9MM GALVABOND
CP15024	C PURLIN, 150X2.4MM GALVABOND
CP20015	C PURLIN, 200X1.5MM GALVABOND
CP20024	C PURLIN, 200X2.4MM, GALVABOND
CP25015	C PURLIN, 250X1.5MM GALVABOND
CP25019	C PURLIN, 250X1.9MM GALVABOND
CP25024	C PURLIN, 250X2.4MM GALVABOND
ZP10015	Z PURLIN, 100X1.5MM GALVABOND
ZP15015	Z PURLIN, 150X1.5MM, GALVABOND
ZP15019	Z PURLIN, 150X1.9MM, GALVABOND
ZP15024	Z PURLIN, 150X2.4MM GALVABOND
ZP20015	Z PURLIN, 200X1.5MM GALVABOND
ZP25015	Z PURLIN, 250X1.5MM GALVABOND

HAND RAILING



Part Number	Material Description
STBPSTDG	STANCHION, BP TYPE, STANDARD, GALV
STBPCNRG	STANCHION, BP TYPE, CORNER, GALV
STBPA45G	STANCHION, BP TYPE, 45> ANGLE, GALV
STBPDOSO	STANCHION, BP TYPE, DOSO, GALV
STIGWG	STANCHION, IGW TYPE, +600MM, GALV
STIGWCNRG	STANCHION, IGW TYPE, CORNER, +600MM, GALV
STIGWDOSO	STANCHION, IGW TYPE, DOSO, +600MM, GALV
STCBSTDG	STANCHION CLOSURE BEND, 32NB, STANDARD, GALV
STCBATOPG	STANCHION CLOSURE BEND, 32NB, 45> ANGLE, GALV
STSB2590G	STANCHION BEND, 25NB, 90 DEGREES, GALV
STSB3290G	STANCHION BEND, 32NB, 90 DEGREES, GALV
STSB2545G	STANCHION BEND, 25NB, 45 DEGREES, GALV
STSB3245G	STANCHION BEND, 32NB, 45 DEGREES, GALV
STIGWNG	STANCHION IGW TYPE +600MM NO DRILLING GALV

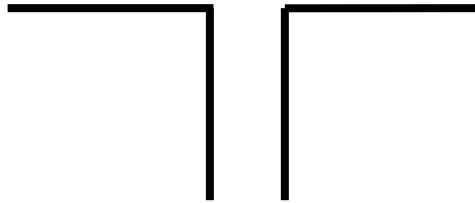
Post Cap

Part Number	Material Description
PC100	POST CAP, ROUND, GALVABOND 100NB
PC150	POST CAP, ROUND, GALVABOND 150NB
PC25	POST CAP, ROUND, GALVABOND 25NB
PC32	POST CAP, ROUND, GALVABOND 32NB
PC40	POST CAP, ROUND, GALVABOND 40NB
PC50	POST CAP, ROUND, GALVABOND 50NB
PC80	POST CAP, ROUND, GALVABOND 80NB
SPC100	POST CAP, SQUARE, GALVABOND 100MM
SPC150	POST CAP, SQUARE, GALVABOND 150MM
SPC50	POST CAP, SQUARE, GALVABOND 50MM
SPC75	POST CAP, SQUARE, GALVABOND 75MM
SPC90	POST CAP, SQUARE, GALVABOND 90MM

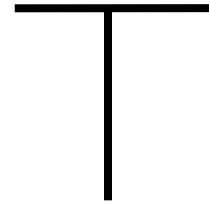
STEEL PROFILES



FLAT BAR



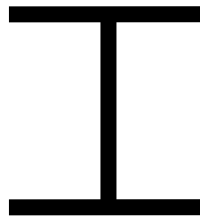
ANGLES



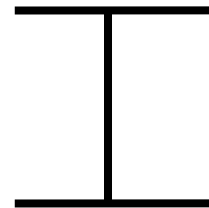
TEE



CHANNEL



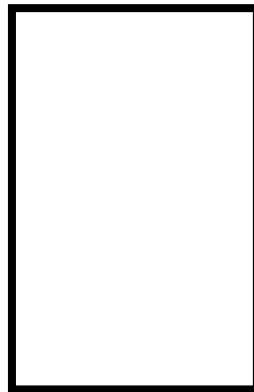
COLUMN



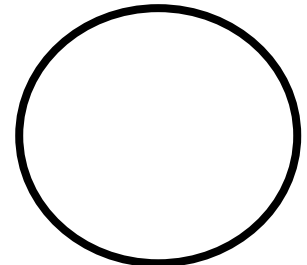
BEAM



S.H.S



R.H.S



C.H.S

Prime Industrial Products - Steel Supplies Division
69 Craigie Street, Bunbury WA 6230
Phone: 08 9780 1199 Fax: 08 9726 0399
Email: steel@primesupplies.com.au